

OptiFeed Drum (FPS11)

Powder transport from drum containers

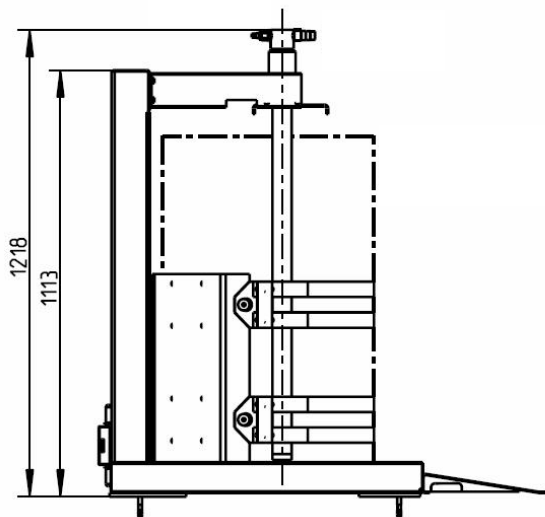
The OptiFeed Drum (FPS11) Fresh powder system is designed for conveying the powder from drum containers.

The OptiFeed PP06 Powder pump transports the powder from the original container. Alternatively, the use of injector powder pumps for organic and enamel powder is possible.

The equipment technology includes:

- Container vibration
- Suction lances with integrated fluidization

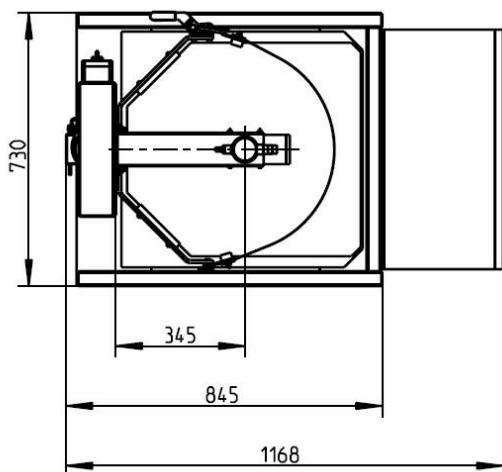




Technical data OptiFeed Drum (FPS11)

Power supply: 3 x 230 / 400V
 Frequency: 50 Hz
 Performance: 0,16 kW

Container sizes:
 Max. diameter: 600 mm
 Max. height: 900 mm



Configurations

Transport of standard powder:

- 1 OptiFeed PP06 Powder pump or
- 1 – 4 PP02 Powder pumps

Transport of enamel powder:

- 1 PP06 Powder pump or
- 1 – 4 EP06 Enamel pumps

Gema Switzerland reserves the right to make technical changes without notice!

009686-EN-Jan 2015

Gema Switzerland GmbH

Mövenstrasse 17 | 9015 St.Gallen | Switzerland
 T +41 71 313 83 00 | F +41 71 313 83 83
www.gemapowdercoating.com

