

OptiFeed BigBag (FPS16)

Powder transport from the original BigBag container

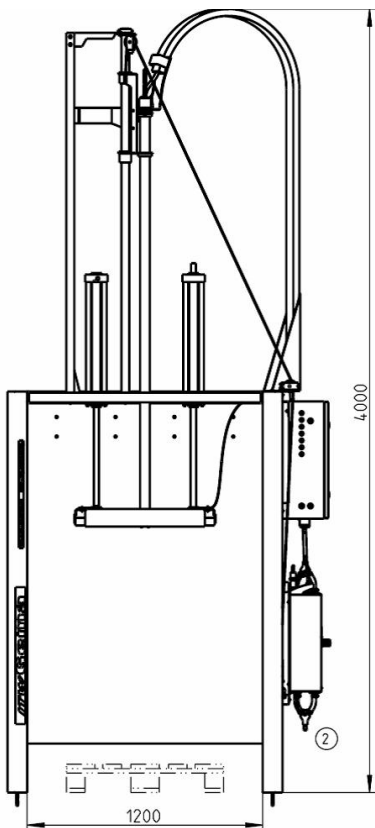
The OptiFeed BigBag (FPS16) fresh powder system is designed for conveying the powder from large BigBag containers.

The OptiFeed PP06 Powder pump transports the powder from the original BigBag container to a distance of up to 25 meters.

The equipment technology includes:

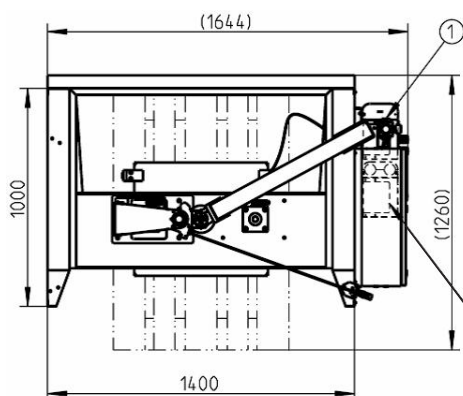
- Powder flow control
- Suction lance with integrated fluidization





Technical data OptiFeed BigBag (FPS16)

Max. load:	500 kg
Container base area:	max. 800 mm x 1200 mm
Compressed air:	max. 8 bar
Air consumption:	max. 0.5 Nm³/h for lifting procedure max. 12 Nm³/h for each PP06 max. 0.5 Nm³/h for fluidization
Power supply:	1 x 230 VAC or 24 VDC
Frequency:	50 / 60 Hz
Performance:	60 VA
Conveying performance:	<8 m = 5000 g/min 8 – 16 m = 4000 g/min 16 – 25 m = 3500 g/min
Powder remaining quantity:	5% of the BigBag content
Connections:	① Female thread ½" ② Powder hose NW16



Configurations

FPS 16-1P:

Equipment with 1 OptiFeed PP06 Powder pump

FPS 16-2P:

Equipment with 2 OptiFeed PP06 Powder pumps

Second pump

Control unit and pumps can be installed on the left or on the right side

Gema Switzerland reserves the right to make technical changes without notice!

Gema Switzerland GmbH

Mövenstrasse 17 | 9015 St.Gallen | Switzerland
T +41 71 313 83 00 | F +41 71 313 83 83
www.gemapowdercoating.com

Gema